

BALCON
± 10'-0" X 8'-0"

S. DINER
± 12'-4" X 12'-0"

CUISINE
± 12'-0" X 11'-9"

ILOT
72" X 36"

L.V.

REFR.

DEP.

SALON
± 11'-10" X 13'-10"

LAV.

SECH.

B.

B.

H.

H.

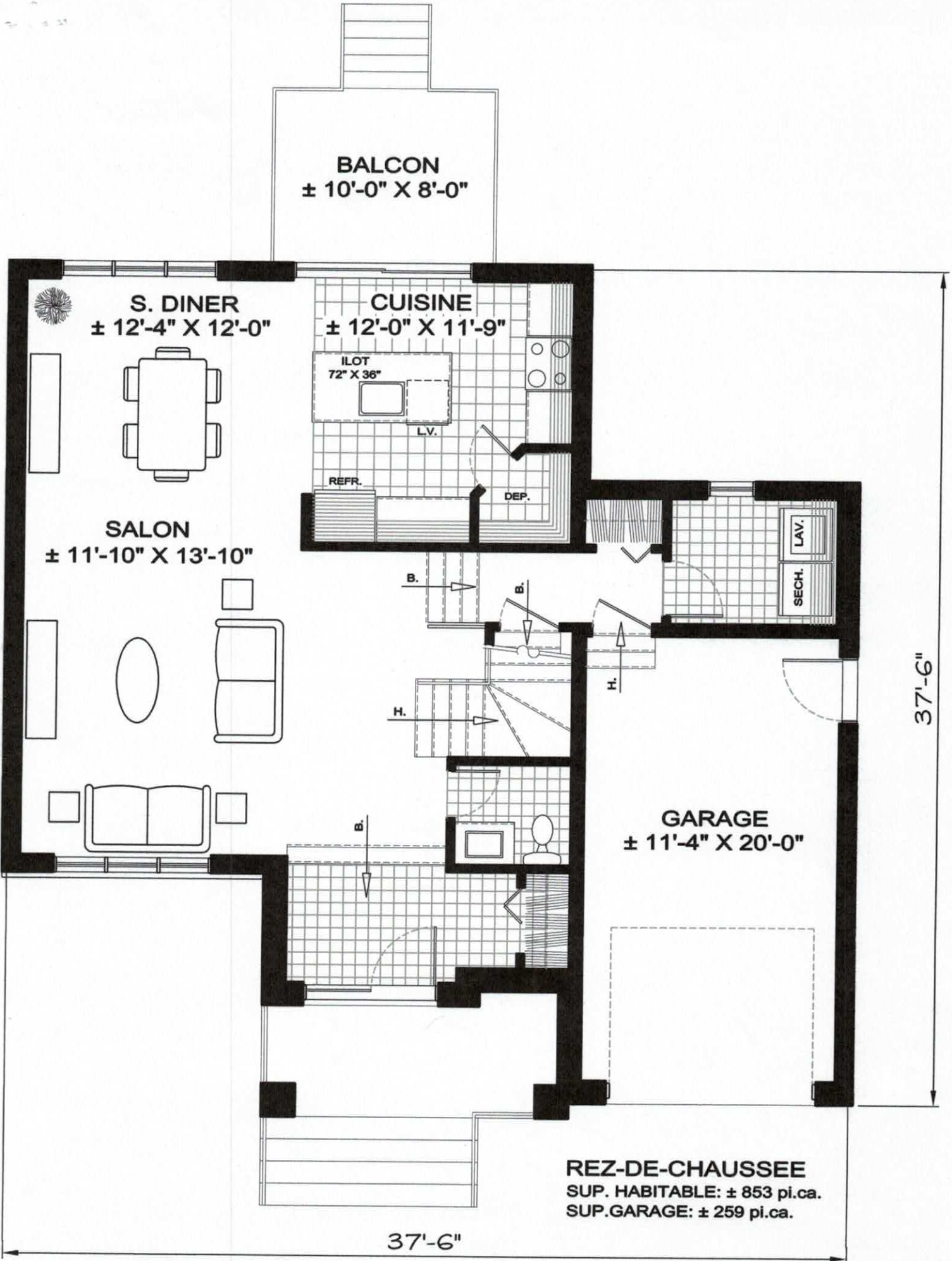
B.

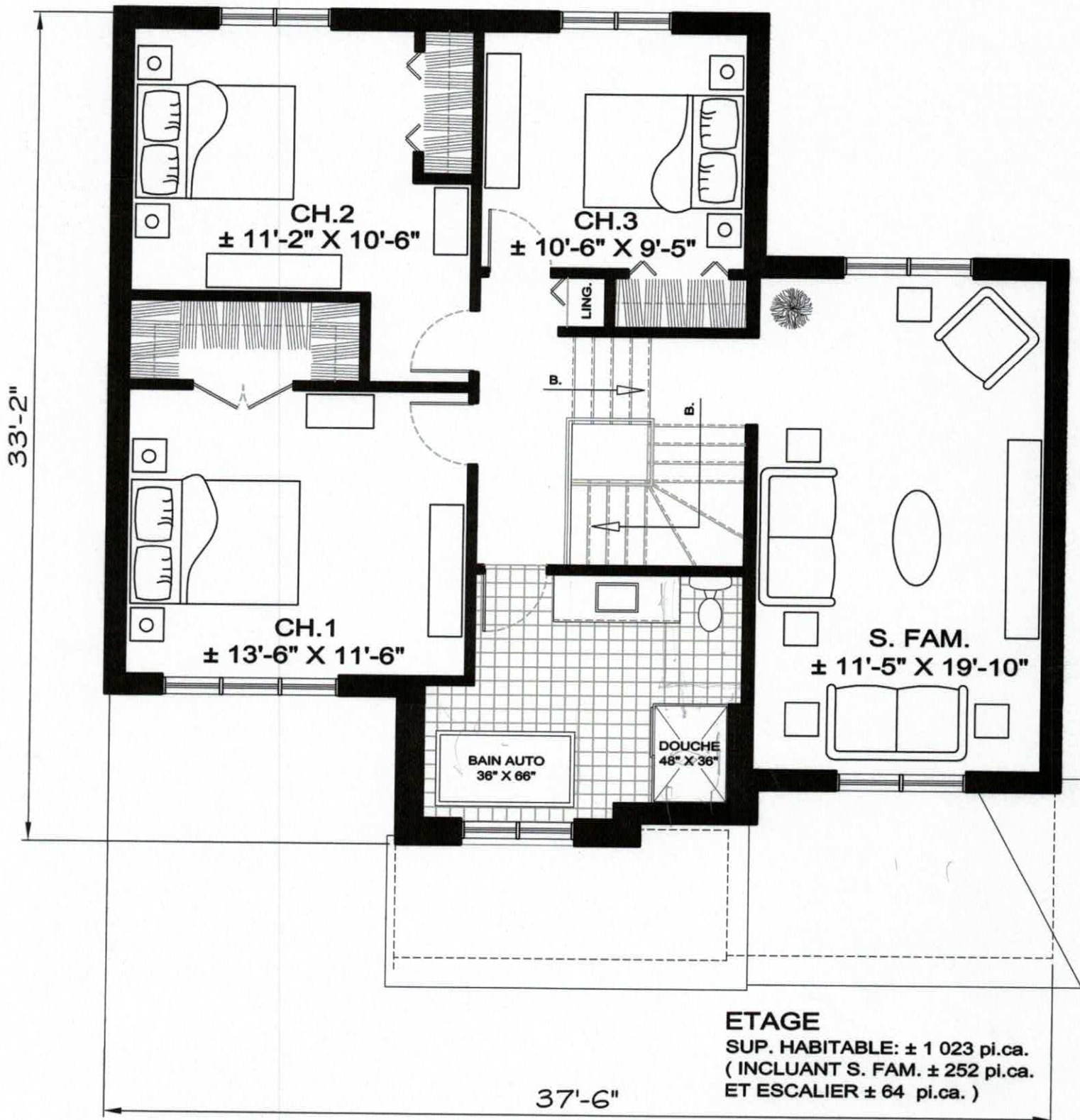
GARAGE
± 11'-4" X 20'-0"

REZ-DE-CHAUSSEE
SUP. HABITABLE: ± 853 pi.ca.
SUP. GARAGE: ± 259 pi.ca.

37'-6"

37'-6"





ETAGE

SUP. HABITABLE: ± 1 023 pi.ca.
 (INCLUANT S. FAM. ± 252 pi.ca.
 ET ESCALIER ± 64 pi.ca.)